

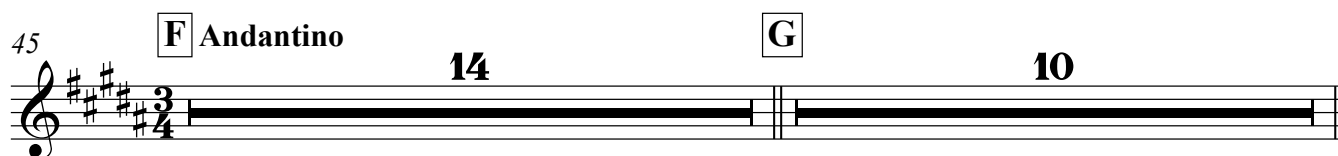
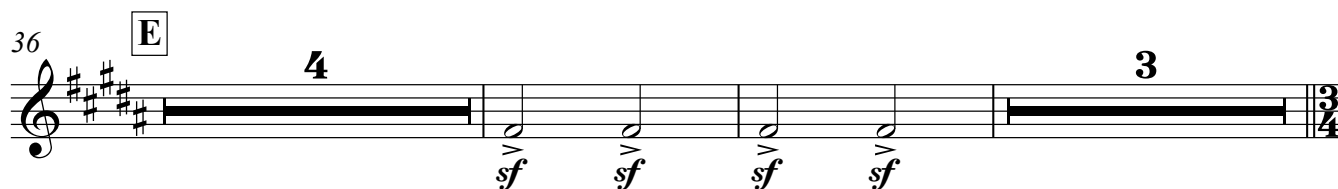
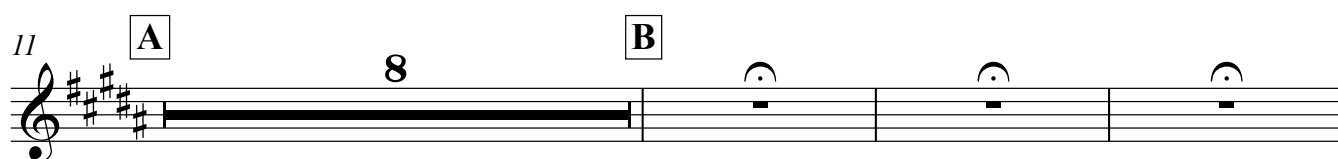
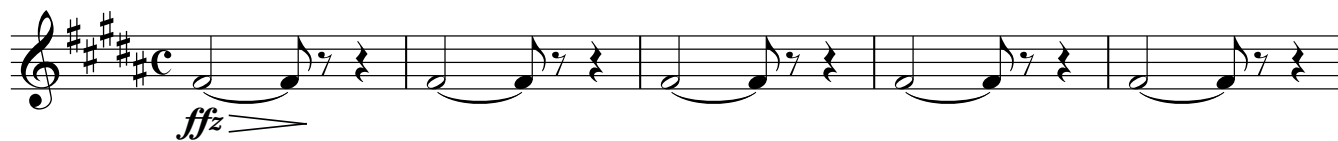
Tenor Saxofon in Bb

L'Arlésienne Suite Nr. 2

I. Pastorale

Georges Bizet, bearbeitet von Fritz Hoffmann
vereinfachte Stimmen Jarkko Riihimäki

Andante sostenuto assai



Pastorale
Tenor Saxofon in Bb

100 **L** **M**

5 8

ffz *ffz* *ffz*

116

ffz *ffz* *ffz* *ffz* *ffz* *ffz*

4

124 **N**

sf *sf* *sf* *sf*

3