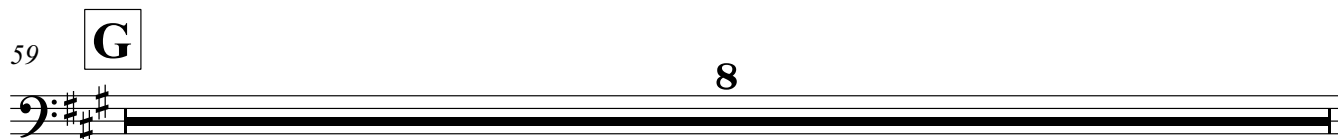
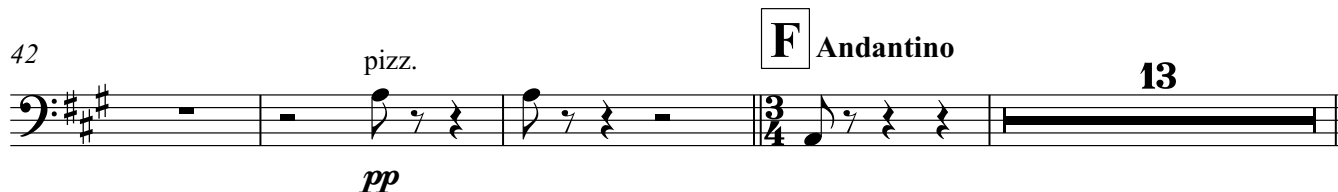
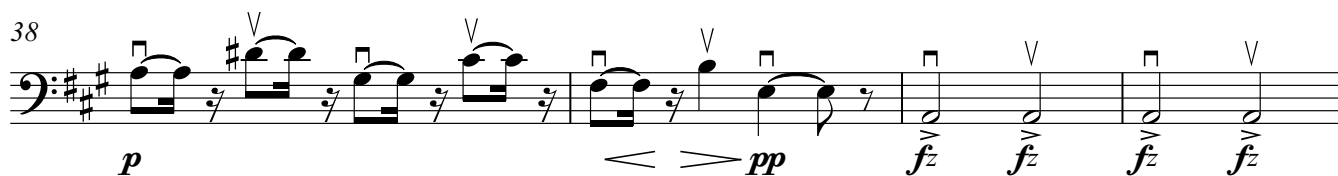
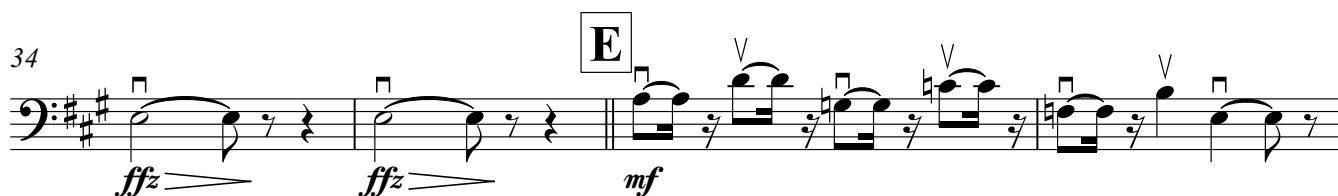
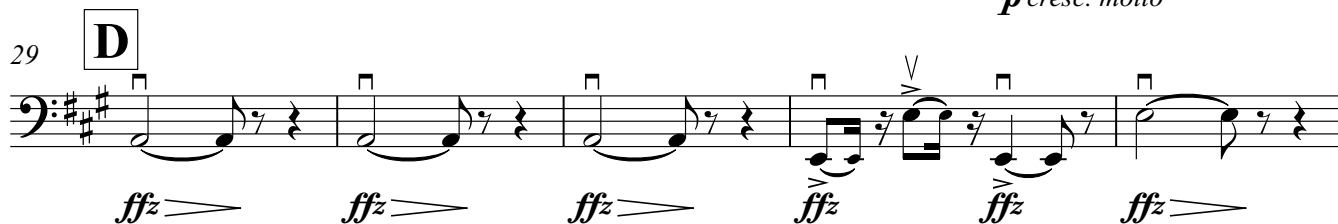
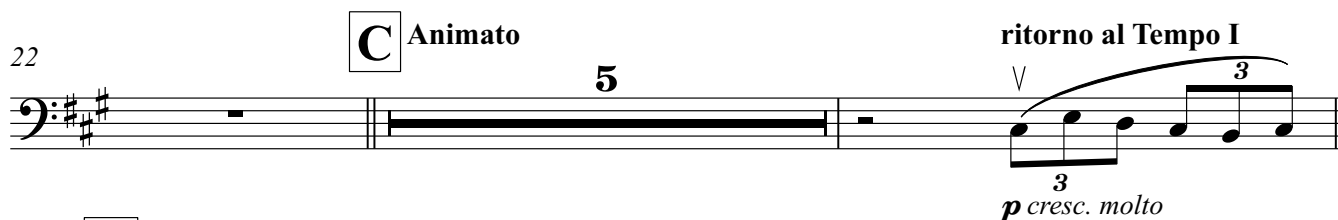
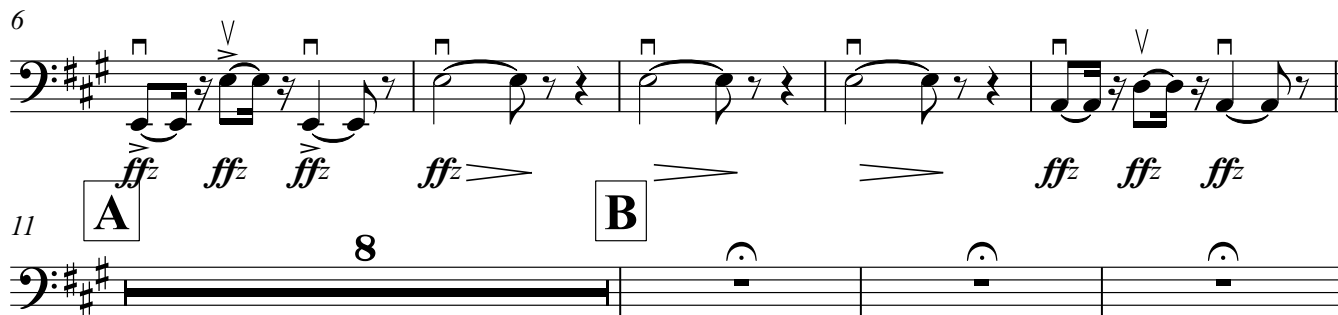
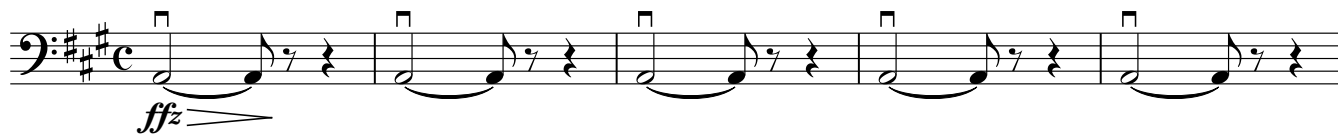


L'Arlésienne Suite Nr. 2

I. Pastorale

Georges Bizet, bearbeitet von Fritz Hoffmann
 vereinfachte Stimmen Jarkko Riihimäki

Andante sostenuto assai

Pastorale

Kontrabass

2

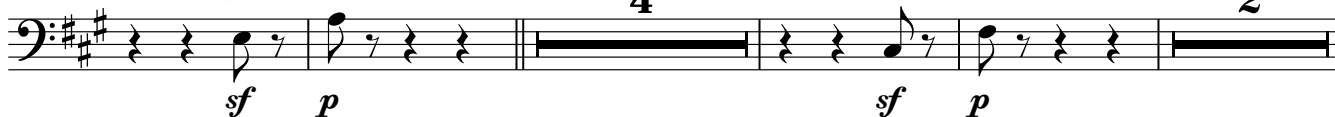
67

pizz.

H

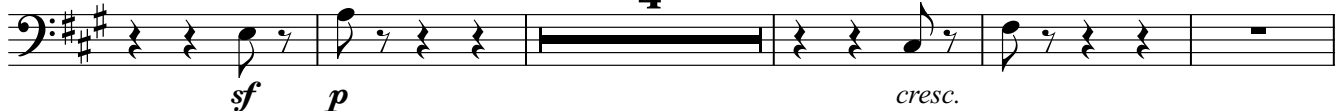
4

2



77

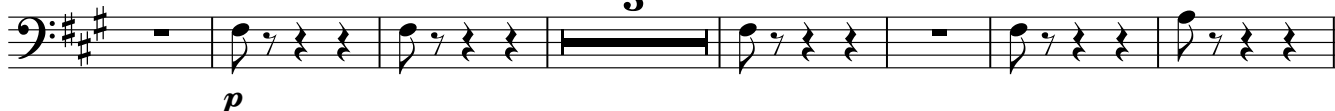
4



86

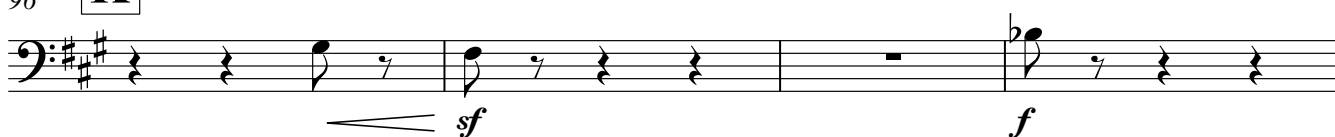
I

3



96

K



100



105

L

2

pizz.

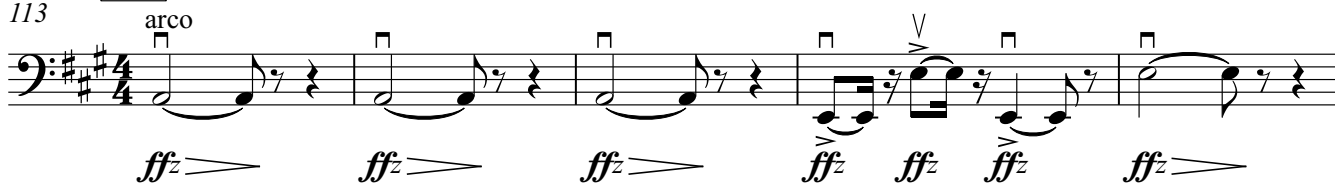
pizz.



113

M

arco



118



121



124

N

pizz.

